

MECO supports Bureau of Energy Efficiency (BEE), Govt. of India's mission to institutionalize certification of Electric / Electronic goods for ECOMARK under Gazette of India



PG07



PG08



POWERGUARD is a simple to use and easy to handle product which can be widely used because of its portability and light weight.

Measures

- Power (W)
- Power Factor (PF) [PG08]
- Current (mA)
- Voltage (V)
- Frequency (Hz)
- Total Usage Time (min)
- Total Used Energy (kWh)
- Carbon Emission (CO₂ in kg)

Features

- Smart Three Pin Socket
- Large LCD Display with Backlight
- Memory Retention [KWh, min.]
- Blinking LCD to indicate Alarm when KW is over threshold
- Counts CO₂ generated by Electrical Equipment (0.555kg CO₂ is generated by using 1 kWh Energy)

General Specifications

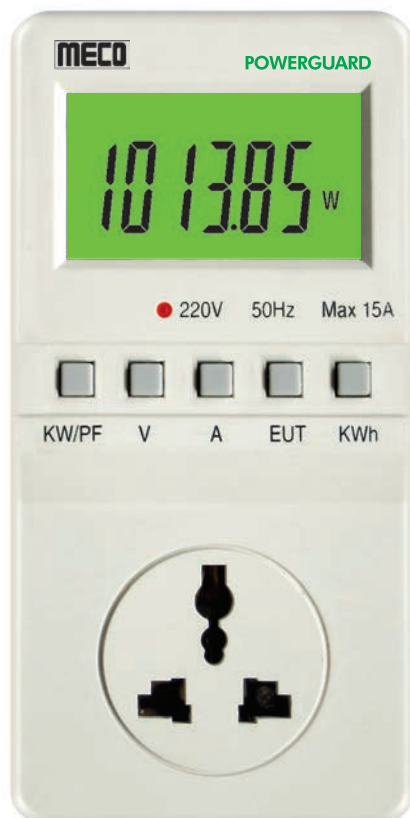
- Accuracy : Class 1.0
- Power Consumption : Less than 1W
- Input : 220V, 50Hz, 10A (max.)
- Working Temperature : -25°C to +55°C
- Dimensions : 120 x 65 x 55mm (approx.)
- Weight : 130gms (approx.)

Specifications

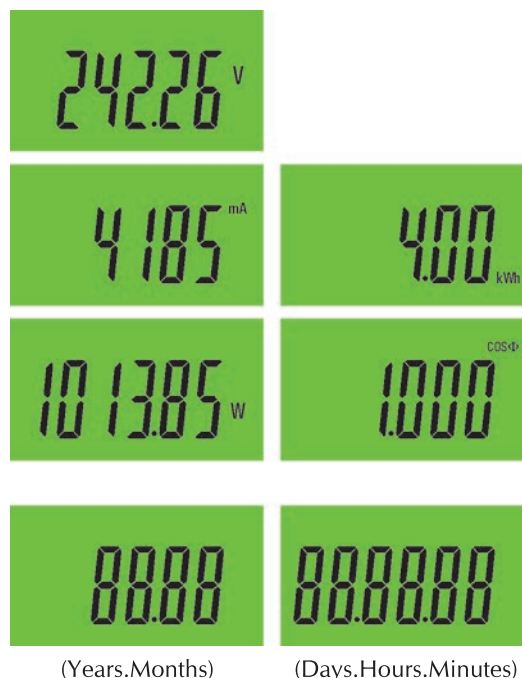
Functions	Input Range (PG07)	Input Range (PG08)	Display Format	Accuracy (% of FS) (FS = 2200W)
Power (W)	0.2 ~ 1 W 1 ~ 5 W 5 ~ 2200 W	0.2 ~ 1 W 1 ~ 5 W 5 ~ 2200 W	XXXX.xx W	< 10 5 1
Power Factor	NA	For 0.2 ~ 5 W For 5 ~ 10 W For 10 ~ 2200 W	X.XXx	> 0.03 PF < 0.03 PF < 0.01 PF
Current (mA)	0.02 ~ 10 A	0.02 ~ 10 A	XXXxx mA	1
Voltage (V)	195 ~ 265 V	195 ~ 265 V	XXX.xx V	0.5
Frequency (Hz)	Hz	Hz	XX.xx Hz	-
Total Usage Time (min.)	Minutes	Minutes	XXXXxx	-
Total Used Energy (kWh)	For 5 ~ 2200 W	For 5 ~ 2200 W	XXXX.xx kWh	1
CO ₂ (Kg)	CO ₂ (Kg)	CO ₂ (Kg)	XXXX.xx CO ₂ Kg	-
Applications	Teaching, Demonstration & Testing of Electrical Energy Consumption of Household / Office Appliances. It can be used in Houses, Offices, Shops, Schools, Laboratories etc.			

Ordering Information : Model

MECO supports Bureau of Energy Efficiency (BEE), Govt. of India's mission to institutionalize certification of Electric / Electronic goods for ECOMARK under Gazette of India



PG09, PG09H



(Years.Months)

(Days.Hours.Minutes)

POWERGUARD is a simple to use and easy to handle product which can be widely used because of its portability and light weight

Measures

- TRMS Voltage (V)
- TRMS Current (mA)
- Power (W)
- Power Factor (PF)
- Energy Usage Time (EUT)
- Energy Consumption (KWh)

Features

- Smart Three Pin Socket
- Large LCD Display with Backlight
- Memory Retention [KWh, EUT]
- Simple to use
- Easy to handle
- Accurate to measure

General Specifications

- Accuracy : Class 1.0
- Power Consumption : Less than 0.4W (without backlight), less than 0.8W (with backlight)
- Input : 220V, 50Hz, 10A (max.) (Model : PG09)
220V, 50Hz, 15A (max.) (Model : PG09H)
for 10A to 15A not more than 10 minutes continuous
- Meters Constant : 6400 Impulse / KWh
- Working Temperature : -25°C to +55°C
- Dimensions : 158 x 80 x 70mm (approx.)
- Weight : 265gms (approx.)

Specifications

Functions	Input Range (PG09)	Input Range (PG09H)	Display Format	Accuracy (% of FS) (FS = 2200W) PG09 (FS = 3300W) PG09H
RMS Voltage (V)	195 ~ 265 Vrms	195 ~ 265 Vrms	XXX.XX V	0.5
RMS Current (mA)	0.02 ~ 10 Arms	0.15 ~ 15 Arms (for 10A to 15A, not more than 10 minutes continuous)	XXXXX mA	1
Active Power (W)	0.2 ~ 1 W 1 ~ 5 W 5 ~ 2200 W	0.55 ~ 5 W 5 ~ 20 W 20 ~ 3300 W	XXXX.XX W	< 10 5 1
Power Factor (COSΦ)	For : 0.2 ~ 5 W For : 5 ~ 10 W For : 10 ~ 2200 W	For : 0.55 ~ 10 W For : 10 ~ 20 W For : 20 ~ 3300 W	X.XXX COS Φ	> 0.03 PF < 0.03 PF < 0.01 PF
Active Energy (KWh)	For : 5 ~ 2200 W	For : 30 ~ 3300 W	XXXX.XX kWh	1
Energy Usage Time (EUT)	Days/Hours/Minutes Years/Months	Days/Hours/Minutes Years/Months	XX.XX.XX XX.XX	- -
Applications	Teaching, Demonstration & Testing of Electrical Energy Consumption of Household & Office Appliances. It can be used in Houses, Offices, Shops, Schools, Laboratories etc.			

Ordering Information : Model